

CODE NUMBER

3989040

DESCRIPTION

1.5 gpf, Rough Brass Finish, Fixture Connection , Single Flush, Less Push Button, Regal® Concealed Manual Urinal Flushometer.

DETAILS

- Flush Volume: 1.5 gpf (5.7 Lpf)
- Finish: Rough Brass
- Valve: Diaphragm
- Valve Body Material: Brass
- Fixture Type: Urinal
- Push Button: Less (L/C9A)

FEATURES

- Vandal Resistant Metal Direct Acting Push Button
- . I.P.S. Wheel Handle Bak-Chek™ Angle Stop
- Adjustable Tailpiece
- Vacuum Breaker
- Less C9A
- Elbow Flush Connection and Coupling for .” NPT Back Inlet Urinals (for connection in the pipe chase — flush connection through the wall not provided by Sloan)
- Exposed parts Chrome Plated
- High Copper, Low Zinc Brass Castings for Dezincification Resistance
- Non-Hold-Open Push Button and No External Volume Adjustment to Ensure Water Conservation
- Flush Accuracy Controlled by Para -Flo™ Technology



COMPLIANCES & CERTIFICATIONS



(BAA Compliant, BABAA Compliant, UPC Certified)

DOWNLOADS

- [Concealed Flushometer Installation Instructions for Stainless Steel Fixtures](#)
- [Regal Flushometers Repair and Maintenance Guide](#)
- [Additional Downloads](#)

NOTES

All information contained within this document subject to change without notice.

Looking for other variations of the REGAL 613 product? [View the general spec sheet with all options.](#)

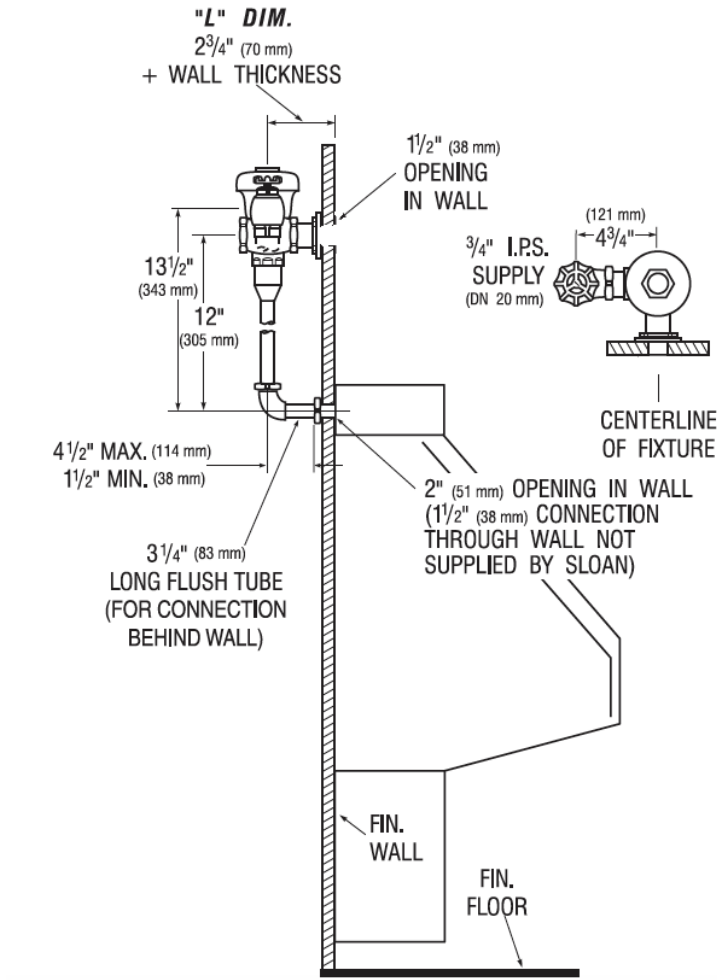
WARRANTY

[View Warranty Information](#)

Sloan 10500 Seymour Ave, Franklin Park, IL 60131

Phone: 800.982.5839 • Fax: 800.447.8329 • sloan.com

ROUGH-IN



Sloan 10500 Seymour Ave, Franklin Park, IL 60131
Phone: 800.982.5839 • Fax: 800.447.8329 • sloan.com