

DESCRIPTION

AER-DEC® 1-Station Wall-Mounted Sink.

DETAILS

- Material: Corian or Quartz
- Width: 30" (762mm)

FEATURES

One-Station Lavatory System with the following features:

- Built in patented airdam technology that eliminates backsplash and updrafts
- A monolithic console available in Corian® or quartz
- Basins can be sized to project requirements
- Many customization options - see Configurator.Sloan.com for all options
- Deck mounted dryer with HEPA filter technology minimizes the risk of slip and fall from water on the bathroom floor
- ADA compliant design and IAPMO certification for commercial load and drain requirements
- Includes deck mounted BASYS style hand dryer standard, available in all of Sloan's finishes
- Pairs great with Sloan BASYS faucets and soap dispensers, available in all of Sloan's finishes

COLORS

- For a complete list of Corian® colors:
<http://www.corian.com/-colors-of-corian-r->
- For a complete list of Corian® quartz colors:
<http://www.corianquartz.com/-colors-of-zodiaq-r->
- For a complete list of Silestone® quartz colors:
<http://www.silestoneusa.com/colors/>

SUGGESTED FAUCETS

This sink is compatible with [BASYS® faucets](#).

VIDEOS

- ▶ [AER-DEC Integrated Sink](#)
- ▶ [Sink Configurator](#)

**COMPLIANCES & CERTIFICATIONS**

IGC156

(ADA Compliant, BAA Compliant, cUPC Certified, IGC156)

RECOMMENDED SPECIFICATION

Sloan AER-DEC Integrated Sink System model no. AD 8X000. Product to be fabricated out of Corian or quartz. Supplied with Sloan EHD-510 deck mounted hand dryer, Sloan EFX Series automated sensor faucet, and Sloan ESD-400 or ESD-500 sensor operated foam soap dispenser. Supplied with Basin that includes patented Airdam for hand dryer performance and HEPA filter included with hand dryer. Sink design to be ADA compliant. Supplied with enclosure.

DOWNLOADS

- [AER-DEC® BASYS® Installation Instructions](#)
- [AER-DEC® BASYS® Repair and Maintenance Guide](#)
- [Additional Downloads](#)

NOTES

All information contained within this document subject to change without notice.

Many customization options - see [architectural worksheet](#) for all options

WARRANTY

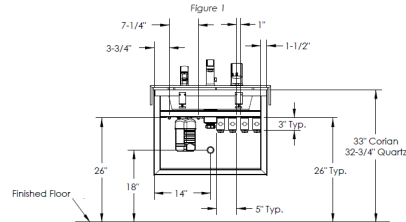
[View Warranty Information](#)

Sloan 10500 Seymour Ave, Franklin Park, IL 60131

Phone: 800.982.5839 • Fax: 800.447.8329 • sloan.com

ROUGH-IN

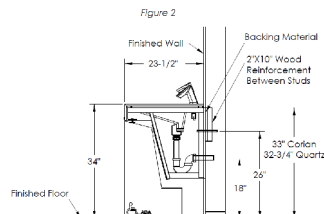
Rough-in (One Station): Plumbing and Electrical, Front View



Notes:

1. Hot and cold water supply line location subject to local codes.
2. Hand Dryer Motor alone, without heater option activated, is only 500 watts or less with speed control.
3. Hand Dryer with Heater requires 1500 watts or less with speed control.
4. Each Hand Dryer Motor shall be plugged into a dedicated 20 amp GFI safety circuit.
5. Hand Dryer Motor to have a dedicated circuit with power cord and grounded plug.
6. Each Faucet and Soap Dispenser requires a dedicated 15 amp GFI safety circuit.
7. Cut backing to allow for electrical and plumbing components.
8. Electrical boxes need to be vertically, flush mounted to backing material, to allow for plumbing and component clearance.
9. Electrical cutouts can fit either two outlet junction boxes or one quad outlet junction box.

Rough-in (One Station): Section View



Notes:

1. Backing material should equal thickness of drywall, 1/2\" min.
2. Angled enclosure shown, rough-in dimensions for vertical enclosure are the same.

Sloan 10500 Seymour Ave, Franklin Park, IL 60131

Phone: 800.982.5839 • Fax: 800.447.8329 • sloan.com